



SP 620 EC-DU / 622 EC-BL-DU / 625 EC-DU / 628 EC-DU



SP 620 EC-DU



SP 622 EC-BL-DU



SP 625 EC-LC-DU



SP 628 EC-DU

Product Features

- delivers two different media at the same time
- oil free
- maintenance free
- minimum vibrations
- reduced pulsation
- low noise
- small size
- high flow
- lightweight
- minimal current consumption
- virtually leak tight

Applications

- Blood Pressure Monitoring
- Anaesthesia Equipment
- Exhaust Gas Analysers
- Gas Detectors
- Autosamplers
- Pipetting Devices
- Pneumatics



SP 620 EC-DU / 622 EC-BL-DU / 625 EC-DU / 628 EC-DU

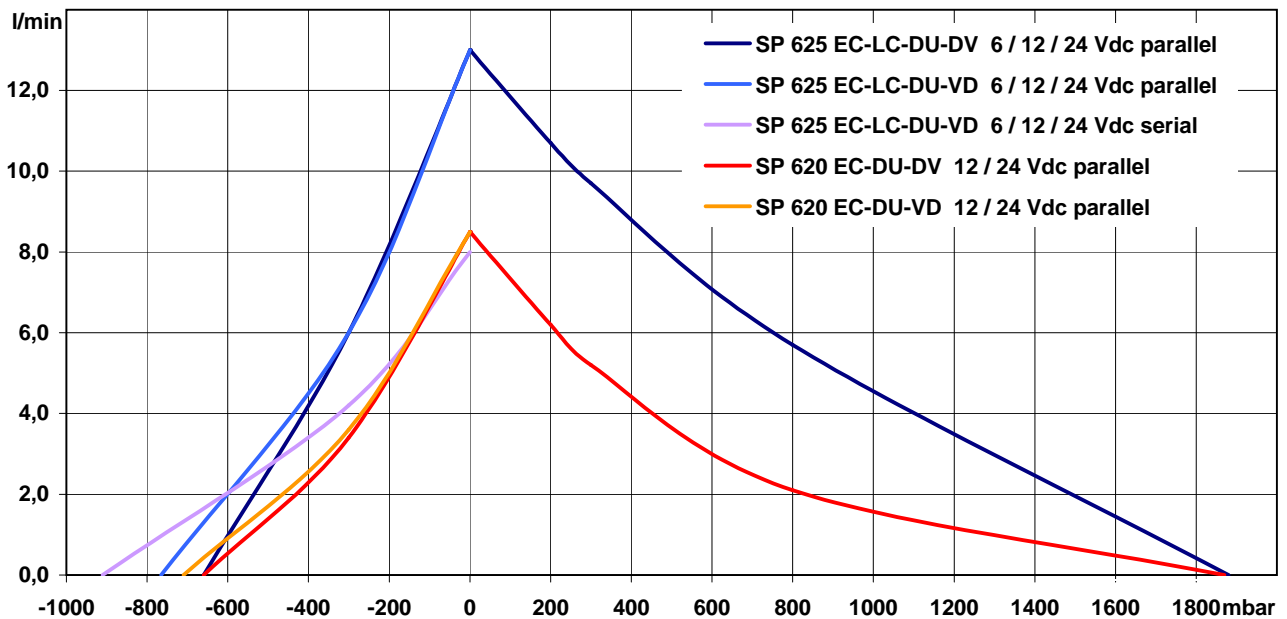
The pumps listed below represent a typical selection of our wide range of eccentric pumps and are intended for initial tests.

Customised versions for your individual application would be made without extra costs - please contact us!

Note: In order to achieve highest life time, we offer different diaphragm designs. Please inform us about your application.

| Designation | SP 620 EC-DU-DV | | SP 620 EC-DU-VD | | SP 625 EC-LC-DU-DV | | | SP 625 EC-LC-DU-VD | | |
|----------------------------------|----------------------|---|-----------------|---------|--------------------|--------------------|---------|---------------------------------|---------|---------|
| Operating Voltage | 12 Vdc | 24 Vdc | 12 Vdc | 24 Vdc | 6 Vdc | 12 Vdc | 24 Vdc | 6 Vdc | 12 Vdc | 24 Vdc |
| Art.No. | 7s57082 | 7s57083 | 7s57131 | 7s57132 | 7s57077 | 7s57078 | 7s57079 | 7s57095 | 7s57096 | 7s57097 |
| Pneumatic Performance | | | | | | | | | | |
| Free Flow [l/min] | parallel 8,5 | | parallel 8,5 | | parallel 13,0 | | | serial / parallel 8,0 / 13,0 | | |
| flow at: Pressure Side | | | | | | | | | | |
| 300 mbar [l/min] | 5,2 | | - | | 9,7 | | | - | | |
| max. Pressure [mbar] | 1870 | | - | | 1880 | | | - | | |
| flow at: Vacuum Side | | | | | | | | | | |
| -300 mbar [l/min] | 3,4 | | 3,6 | | 6,0 | | | 4,2 / 6,0 | | |
| max. Vacuum [mbar] | -660 | | -710 | | -660 | | | -910 / -765 | | |
| Motor / Power Consumption | | | | | | | | | | |
| Motor Type | standard optional | Long Life Double Ball Bearing | | | | Low Cost Iron Core | | | | |
| max. Current [mA] | 800 | 350 | 800 | 350 | 2000 | 1100 | 800 | 2000 | 1100 | 800 |
| Construction | | | | | | | | | | |
| Pump Head | standard optional | PPS customer specific - upon request | | | | | | | | |
| Diaphragm, Valves | standard optional | EPDM FPM (Viton), FFPM (Kalrez), PTFE (Teflon) | | | | | | | | |
| Tubing | | PUR | | | | | | | | |
| Weight [g] | | 230 | | 230 | | 250 | | | 250 | |

Performance Curves



Steeler Strasse 477 • 45276 Essen • Germany
 Phone: +49 201 31697-0 • Fax: +49 201 31697-29
 e-mail: info@schwarzer.com • http://www.schwarzer.com



SP 620 EC-DU / 622 EC-BL-DU / 625 EC-DU / 628 EC-DU

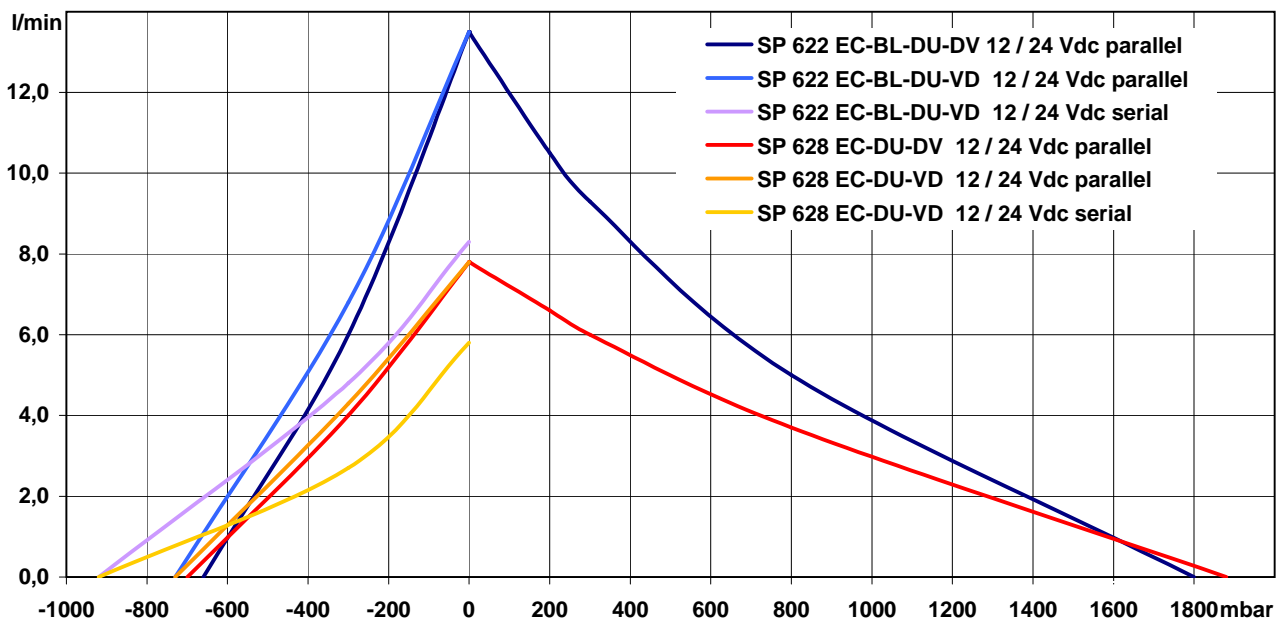
The pumps listed below represent a typical selection of our wide range of eccentric pumps and are intended for initial tests.

Customised versions for your individual application would be made without extra costs - please contact us!

Note: In order to achieve highest life time, we offer different diaphragm designs. Please inform us about your application.

| Designation | SP 622 EC-BL-DU-DV | | SP 622 EC-BL-DU-VD | | SP 628 EC-DU-DV | | SP 628 EC-DU-VD | | |
|----------------------------------|----------------------|---|---------------------------------|------------|-----------------|-------------------------------|--------------------------------|---------|--|
| Operating Voltage | 12 Vdc | 24 Vdc | 12 Vdc | 24 Vdc | 12 Vdc | 24 Vdc | 12 Vdc | 24 Vdc | |
| Art.No. | 7s57093 | 7s57094 | 7s57090 | 7s57091 | 7s57134 | 7s57135 | 7s57137 | 7s57138 | |
| Pneumatic Performance | | | | | | | | | |
| Free Flow [l/min] | parallel 13,5 | | serial / parallel 8,3 / 13,5 | | parallel 7,8 | | serial / parallel 5,8 / 7,8 | | |
| flow at: Pressure Side | | | | | | | | | |
| 300 mbar [l/min] | 9,3 | | - | | 6,0 | | - | | |
| max. Pressure [mbar] | 1800 | | - | | 1880 | | - | | |
| flow at: Vacuum Side | | | | | | | | | |
| -300 mbar [l/min] | 6,0 | | 4,8 / 6,8 | | 4,0 | | 2,7 / 4,3 | | |
| max. Vacuum [mbar] | -660 | | -920 / -730 | | -700 | | -920 / -730 | | |
| Motor / Power Consumption | | | | | | | | | |
| Motor Type | standard optional | brushless (analog, PWM signal) | | | | Long Life Double Ball Bearing | | | |
| max. Current [mA] | 1500 750 | 1500 750 | 1500 750 | 780 340 | 780 340 | 780 340 | 780 340 | | |
| Construction | | | | | | | | | |
| Pump Head | standard optional | PPS customer specific - upon request | | | | | | | |
| Diaphragm, Valves | standard optional | EPDM FPM (Viton), FFPM (Kalrez), PTFE (Teflon) | | | | | | | |
| Tubing | | PUR | | | | | | | |
| Weight [g] | 203 | | 203 | | 320 | | 320 | | |

Performance Curves

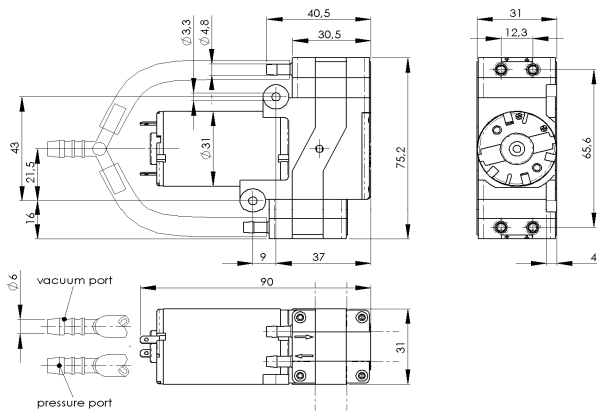


Steeler Strasse 477 • 45276 Essen • Germany
 Phone: +49 201 31697-0 • Fax: +49 201 31697-29
 e-mail: info@schwarzer.com • http://www.schwarzer.com

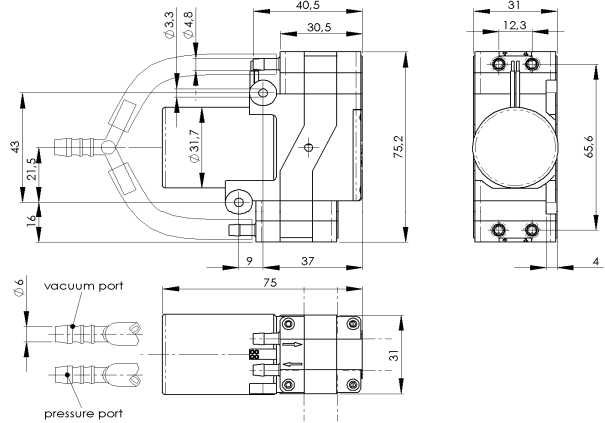


SP 620 EC-DU / 622 EC-BL-DU / 625 EC-LC-DU / 628 EC-DU

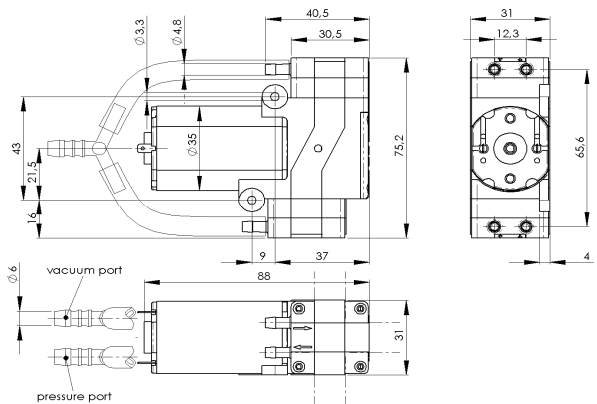
SP 620 EC-DU



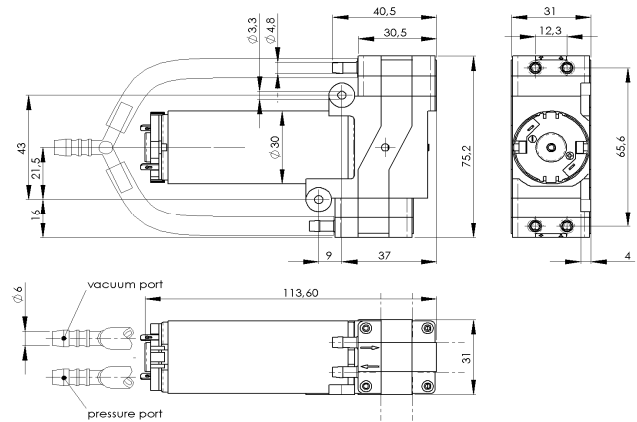
SP 622 EC-BL-DU



SP 625 EC-LC-DU



SP 628 EC-DU



Standard: connection ports as shown. Optional: 3 other port positions possible (see dashed lines)

